

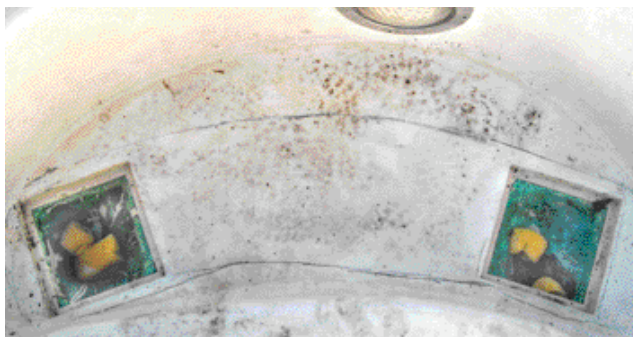
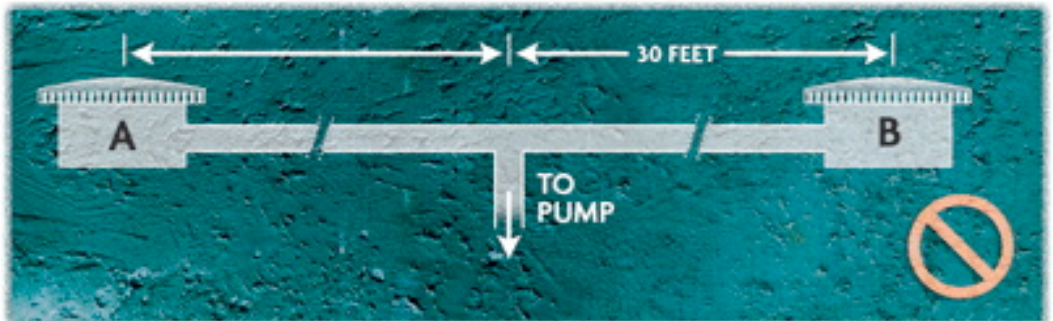


Illustration A: These drains have been placed in series, with the tee set under Drain A. The drains can't pull equally. Drain B is weaker. If Drain A were to become blocked, its counterpart may not be able to prevent a vacuum from forming.



Illustration B: Here, the tee is set too close to Drain A and too far from Drain B. Again, Drain B becomes less effective.

Illustration C: While the tee is correctly placed, both drains are set too far away from it. With too much distance between the tee and drain, you can't achieve proper flow. Studies are still determining how far is too far, but one expert recommends no more than 8 feet between the tee and drain.



PHOTOS COURTESY PAVAN POOL SERVICE

The big fake-out: At first, this system appeared legitimate, above left. Each drain had two pipes — one presumably connecting to the pump and the other to the skimmer equalization line. But when air was forced through the skimmer, bubbles only came out of one drain. Professionals cut the concrete to investigate, above right. But the drains ran separately. The two stub-ups with connecting pipe, opposite, led to nowhere, and seemed to be just for show.



The right and wrong way: Service professional Javier Payan photographs each drain configuration he inspects, with the address included in the frame. In the top photo, the drains are not balanced, with the tee sitting below the right outlet. Cutting pipes on another site, middle, shows they are clogged with concrete, rendering one of the drains useless. At bottom, a properly re-plumbed dual-drain system, with the tee set in the middle.

PHOTOS COURTESY PAVAN POOL SERVICE